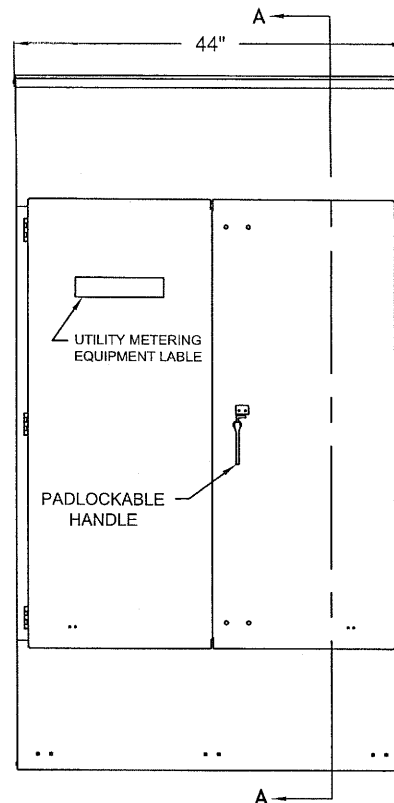


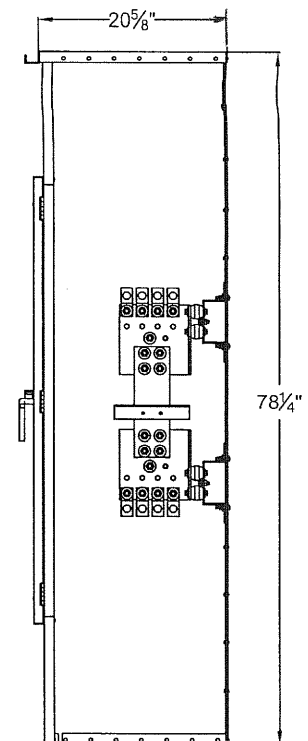
FRONT ELEVATION LESS FRONT COVERS

CAT.# CT303-FECD (3Ø 3W)

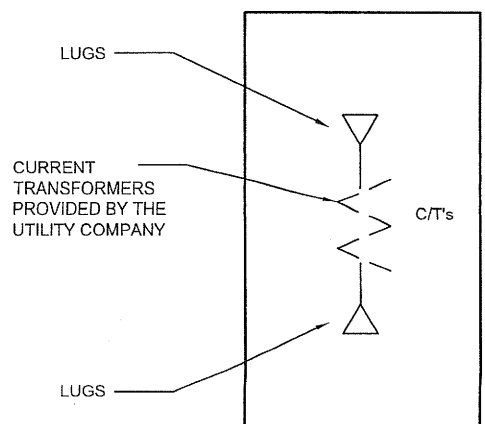
CAT.# CT304-FECD (3Ø 4W)



FRONT ELEVATION ENCLOSED



SECTION A-A




ONE LINE DIAGRAM

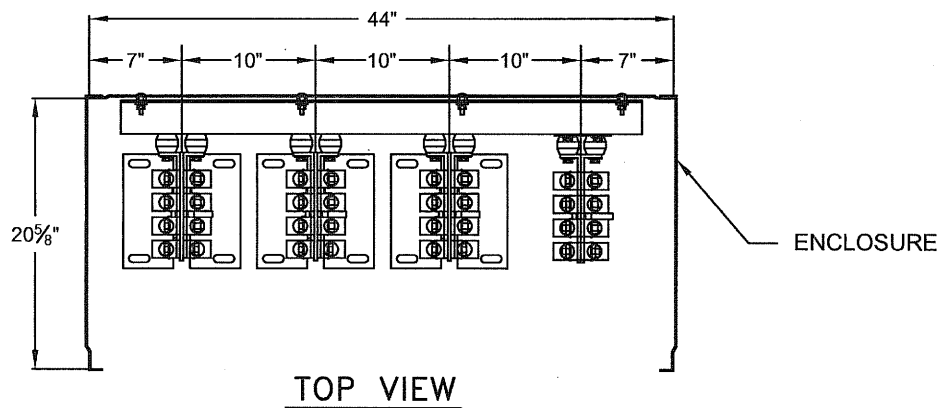
NOTES:

THIS EQUIPMENT IS FURNISHED IN TYPE 3R ALUMINUM ENCLOSURES.

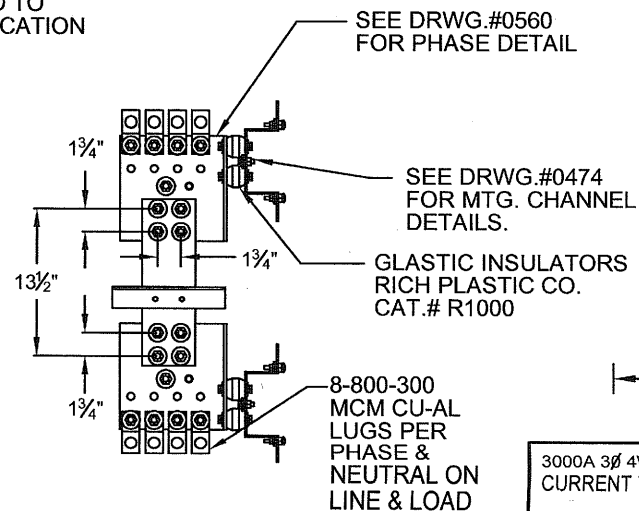
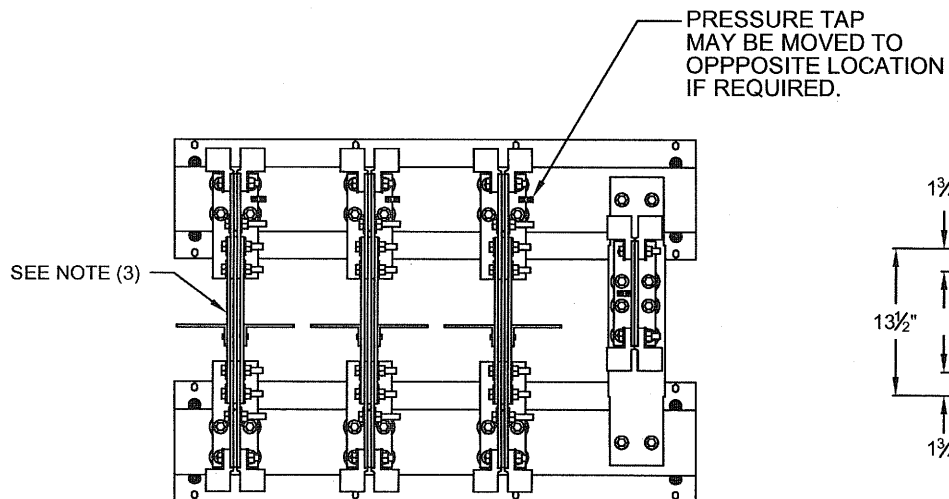
THE METERING TRANSFORMER CABINET IS LISTED BY UNDERWRITERS LABORATORIES INC. AND HAS AN UNPROTECTED SHORT CIRCUIT CURRENT RATING OF 100,000 R.M.S. SYM. AMPERES.

12"
SCALE

3000A METERING TRANSFORMER CABINET	CT-03580.20 3/29/06 KE
 ELECTRICAL EQUIPMENT COMPANY 475 BONNIE LANE, ELK GROVE VILLAGE, ILLINOIS 60007-1907 TELEPHONE: (847)-640-7701 FAX: (847)-640-0565	



- (1) CURRENT TRANSFORMERS ARE TO BE PROVIDED BY THE UTILITY CO.
- (2) EACH LINE AND LOAD TERMINAL PROVIDED WILL ACCEPT (1) 800-300 MCM COPPER OR ALUMINUM CONDUCTORS PER PHASE AND NEUTRAL. 8 TERMINALS ARE PROVIDED AS SHOWN.
- (3) PROVIDE (3) 1/4" X 4" COPPER REMOVABLE LINKS PER PHASE WITH INSULATED CURRENT TRANSFORMER SUPPORTS.



12"
SCALE

SIDE VIEW

3000A 3Ø 4W CURRENT TRANSFORMER CABINETS	CT-03580.03
	3/29/06 KE
ERICKSON ELECTRICAL EQUIP. CO. 475 BONNIE LANE ELK GROVE VILLAGE, IL 60007	