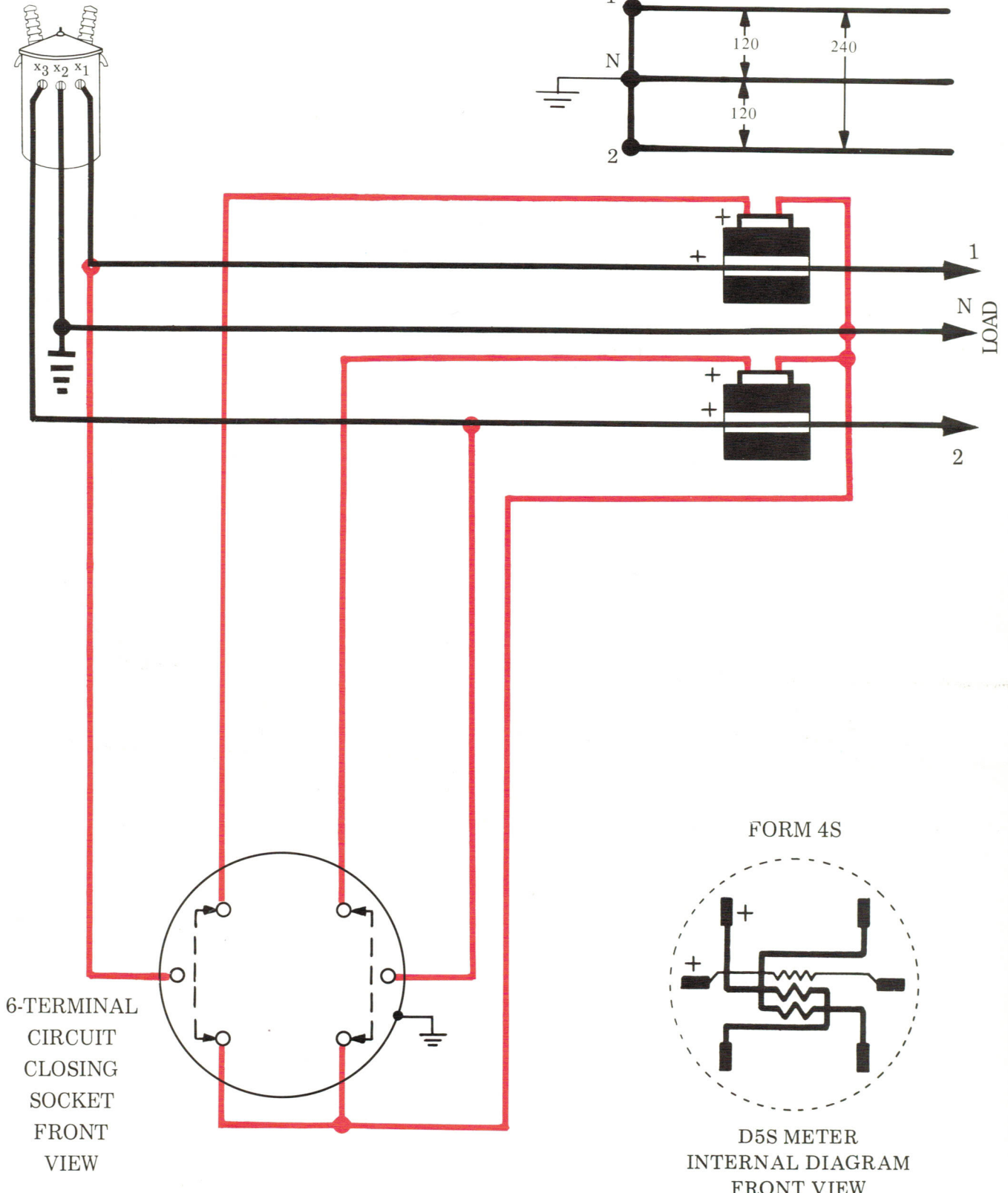


**SINGLE-PHASE,
THREE-WIRE
WITH
TWO WINDOW TYPE CT'S**

Measurement of energy on a single-phase, three-wire service with 2 CT's and a three-wire single-phase meter.

conventional method ...



THE REGISTER MULTIPLIER EQUALS THE CT RATIO
FOR SECONDARY-RATED METERS