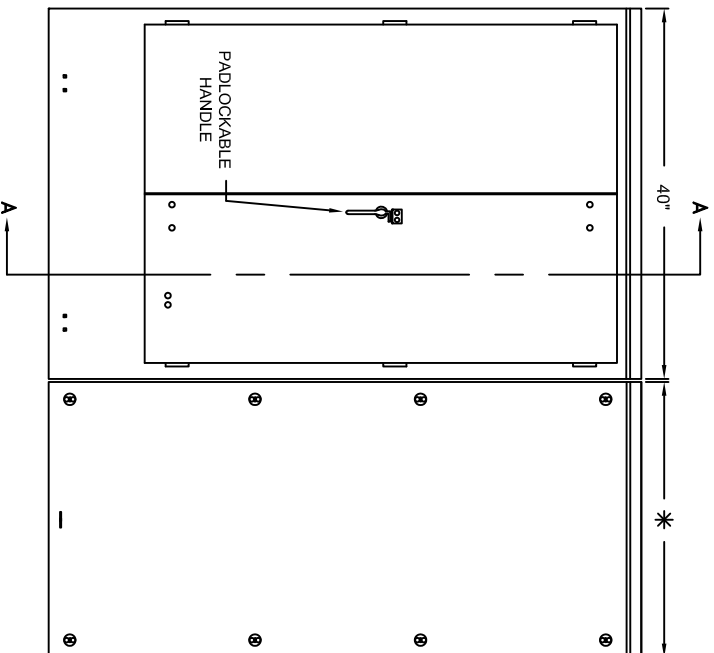
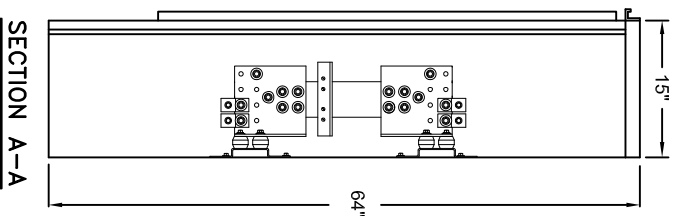


FRONT ELEVATION LESS FRONTS

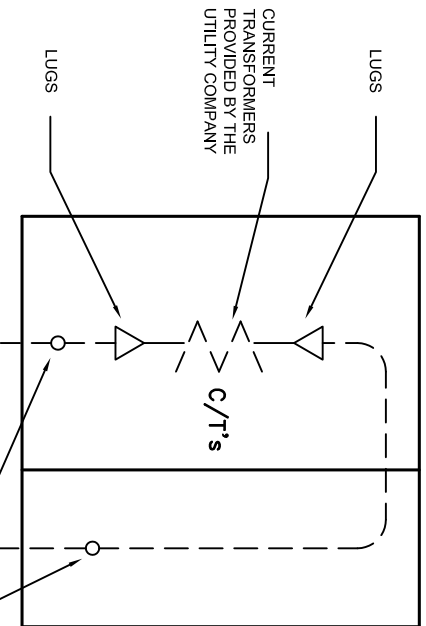
* SIDE GUTTERS AVAILABLE IN WIDTHS OF 18", 24", 30", OR 36".
(18" = 70 LB., 24" = 80 LB., 30" = 95 LB., 36" = 105 LB.)



FRONT ELEVATION ENCLOSED



SECTION A-A



ONE LINE DIAGRAM

SERVICE
CONDUCTORS &
FIELD WIRING
BY CONTRACTOR

SYSTEM	CATALOG #	INTERIOR DWG. #	WITHSTAND RATING	SHIPPING WEIGHT
3Ø 3W *	CT163-SGR-FECD	03350.02	100,000A	300
3Ø 4W	CT164-SGR-FECD	03350.03	100,000A	320

** LESS SIDEGUTTER WEIGHT

* CHECK WITH UTILITY CO. FOR SUITABILITY OF THIS EQUIPMENT

NOTES:
THIS EQUIPMENT IS FURNISHED IN TYPE 3R ALUMINUM ENCLOSURES.
THE METERING TRANSFORMER CABINET IS LISTED BY UNDERWRITERS LABORATORIES INC. AND HAS AN UNPROTECTED SHORT CIRCUIT CURRENT RATING OF 100,000 R.M.S. SYM. AMPERES.

12"
SCALE

1600A 600V CURRENT TRANSFORMER CABINETS WITH RIGHT SIDE GUTTER FIRST ENERGY CORP. ERICKSON ELECTRICAL EQUIP. CO. 475 BONNIE LANE ELK GROVE VILLAGE, IL 60007	CT-03350.24 6/7/93 BE 3/23/06 KE 6/21/07 KE 7/23/07 KE
--	--